



Project



Royal Netherlands Embassy, Accra, Ghana


Renewal of the Royal Netherlands Embassy in Accra was part of an ongoing Dutch government scheme to upgrade foreign representations and have them reflect the cultural heritage of Dutch architecture. The facilities in Accra at that time did not do just to the deepening relationship between the two countries. More space was required to accommodate the increasing number of visitors to the embassy building.

The new embassy is located at the interchange of the main circular road around central Accra and the main road leading to the city centre. Its architect recognised the importance of a bold architectural statement in limited dimensions. The building also visualises the cultural differences between host nation Ghana and the Netherlands, by combining low-tech materials with high-tech finishes and contemporary art. The hull of the building deals with the challenges of a tropical climate combining the simple principle of mass and insulation with sophisticated automatically controlled moveable sunblinds.



Location	89 Liberation Road, Accra, Ghana
Client	Ministry of Foreign Affairs, Real Estate Abroad Department, The Hague, the Netherlands
Contractor	BAM International bv
Contract period	April 2005 - October 2006
Contract sum	€ 6 million

'Built to European quality standards with distinctive architecture previously unseen in Western Africa.'



On Queen's Day (30 April) 2005, the Dutch ambassador and Interbeton bv (now called BAM International) signed the construction contract for the new Royal Netherlands Embassy in Accra, Ghana. The Dutch Ministry of Foreign Affairs, Real Estate Abroad Department, had awarded the contract to our company following a public tender and an evaluation process.

Colonial-style

The building site was a plot already occupied by the Dutch embassy and consular section, which were housed in separate colonial-style villas. The new building was constructed between the existing structures – which remained operational during construction. Upon completion of the new building, the villas were demolished, and the additional area integrated into the park-like garden.

Entrance

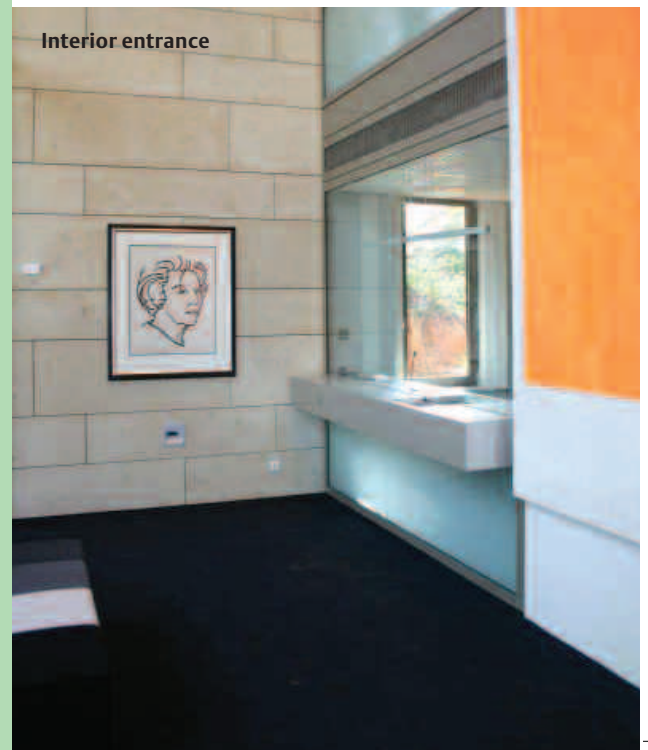


Roof terrace

All over the world

Building materials for the project came from all over the world: natural stone from China for the floors, natural tone cladding for the facades from Germany, and most of the interior finishes from the Netherlands, the Czech Republic and Italy.

Interior entrance



BAM International bv

P.O. Box 414
H.J. Nederhorststraat 1
2800 AK Gouda
The Netherlands
T +31 (0)182 59 06 30
F +31 (0)182 59 08 70
E info@baminternational.com
I www.baminternational.com