

Project

Al Bidda Tower, Doha, Qatar

Twisting and turning like a challenged cobra, the Al Bidda Tower rises 234 metres above Doha's West Bay area. This highly distinctive office tower will play an important part in establishing the area as a business community and financial centre.

The constructive elements of the main tower building follow its twisting shape: all columns are inclined and each floor has its own unique shape. Al Bidda Tower's 43 office floors and huge atrium-style penthouse floor house commercial space, business centres, showrooms, restaurants, an art gallery, an outdoor café and a health club. A single-storey basement connects the twisting tower to an adjoining seven-storey car park building

**Location**

West Bay of Doha, Qatar

Client

Platinum Tower Company

Contractor

BAM Higgs & Hill and ACC

Contract period

June 2005 – May 2009

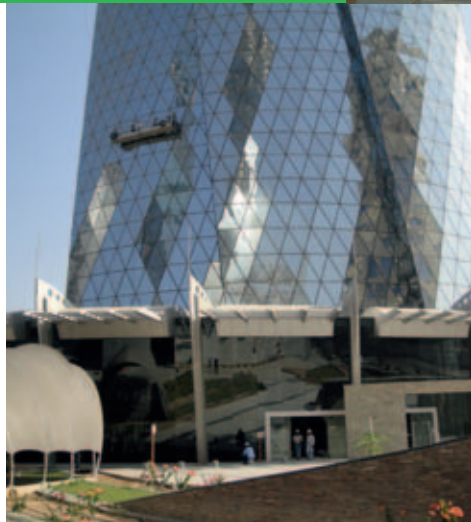
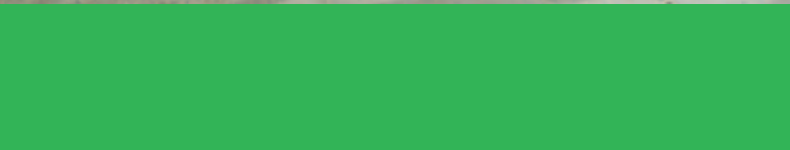
Contract sum

AED 287 million (€ 59 million)

'The triangular glass façade panels give the building its uniquely distinctive appearance'

Details of the tower façade

A few details to illustrate the complexity: the façade consists of 93 pre-assembled mainframe panels per floor, of which only four glazed subframes per floor are alike. That means there are 85 different sizes per floor and a total 3,700 different sizes of glazed subframes. The average installation time per floor (there are 43 of them) was one whole week.



Only the best

Working with only the best subcontractors is a must for striking examples of modern architecture such as Al Bidda Tower. On the design and supply side, subcontractors were chosen with solid engineering resources and the latest 3D modelling utilities. On-site execution of the works was backed up by solid local subcontractors with sufficient numbers of skilled manpower.



BAM International bv

P.O. Box 414
H.J. Nederhorststraat 1
2800 AK Gouda
The Netherlands
T +31 (0)182 59 06 30
F +31 (0)182 59 08 70
E info@baminternational.nl
I www.baminternational.nl

